

How to Install Smartlaunch 4.1

This guide will help you install and setup a Smartlaunch 4.1 on your café.
Before starting the installation make sure to quit all other running applications and installations.

If you are going to store the cd-keys and image files for games on the same machine as the Smartlaunch server, and have more than 10 computers in your café, make sure that you are running a server operating system such as Windows NT or Windows Server 2003 on the machine. The reason for this is that Windows 98/ME/XP can not handle more than 10 connected users to a shared folder.

Step 1: Installing Microsoft .NET Framework 2.0

Both the Smartlaunch server and Client requires that the Microsoft .NET Framework 2.0 Beta is installed on the machine.

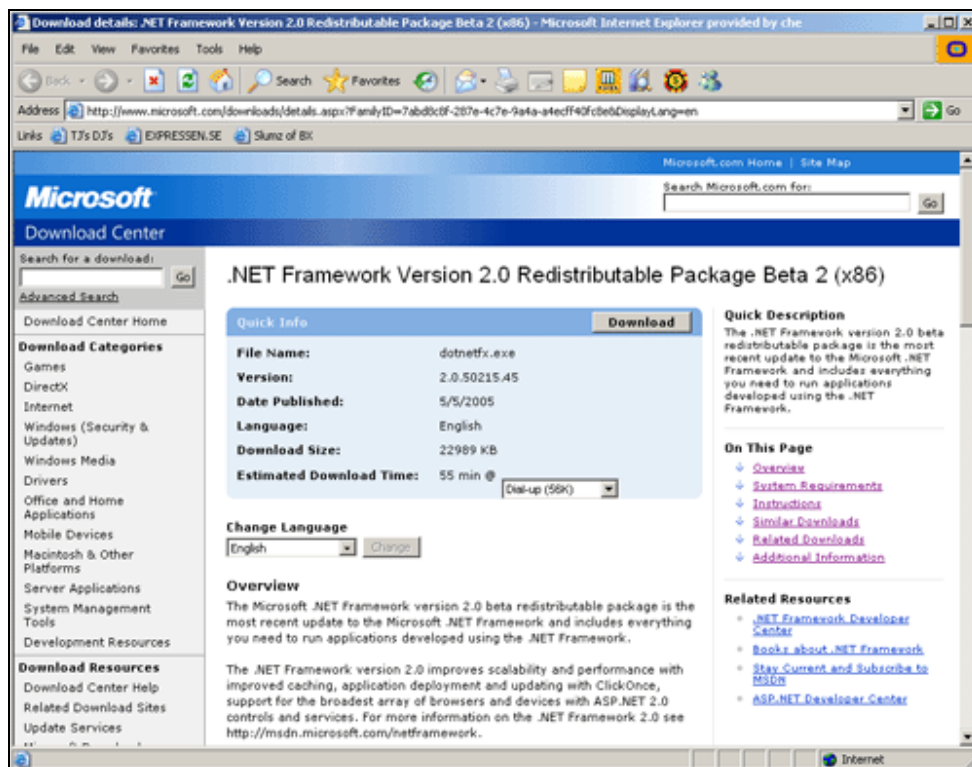


Image 1: Downloading Microsoft .NET Framework

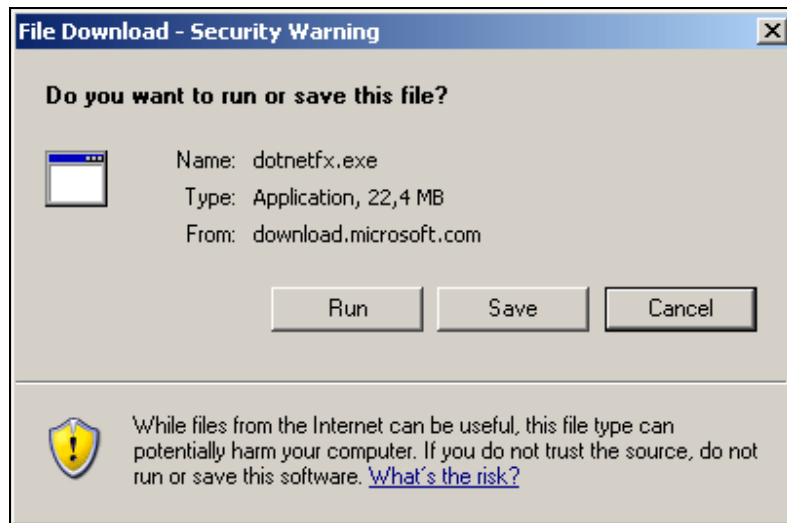


Image 2: Run the dotnetfx.exe file

Running the installation file will bring up a guide helping you install **Microsoft .NET Framework 2.0 Beta**, click **Next** button on the first page to begin the installation process.

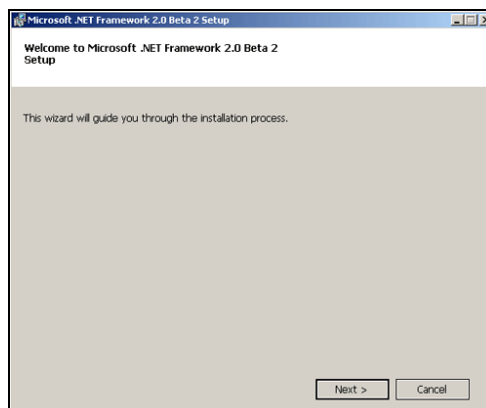


Image 3: Installing Microsoft .NET Framework 2.0 Beta

The next step displays the End-User License Agreement for installing the .NET Framework, click the checkbox reading **I accept the terms of the License Agreement**, and then click the **Install** button to start the installation.

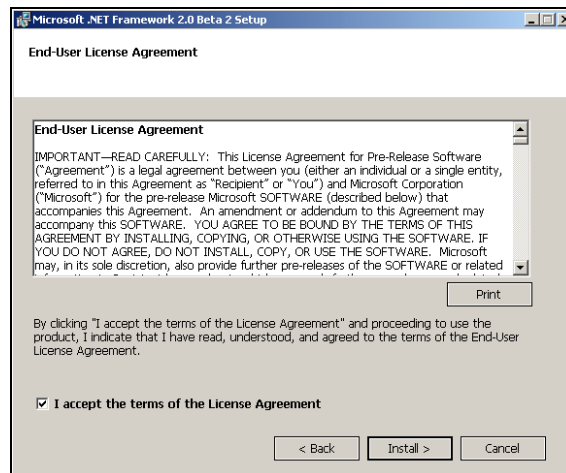


Image 4: Accept the License Agreement

Finish the installation by clicking the **Finish** button when installation is done.

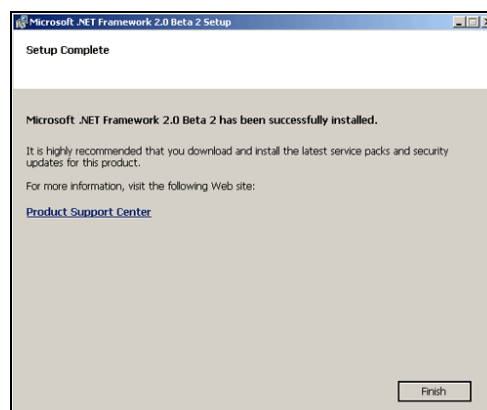


Image 5: Finish the installation

You have now installed the **Microsoft .NET** Framework to the server computer.

Step 2: Installing Smartlaunch

We can now start the Smartlaunch installation by double-clicking the Setup.exe file; this will start the installation as showed on **Image 6**.



Image 6: Installing Smartlaunch

In the next step you can choose which part of Smartlaunch you want to install, the options are:

- 1. Administrator Only**
- 2. Server and Administrator**
- 3. Custom Installation**

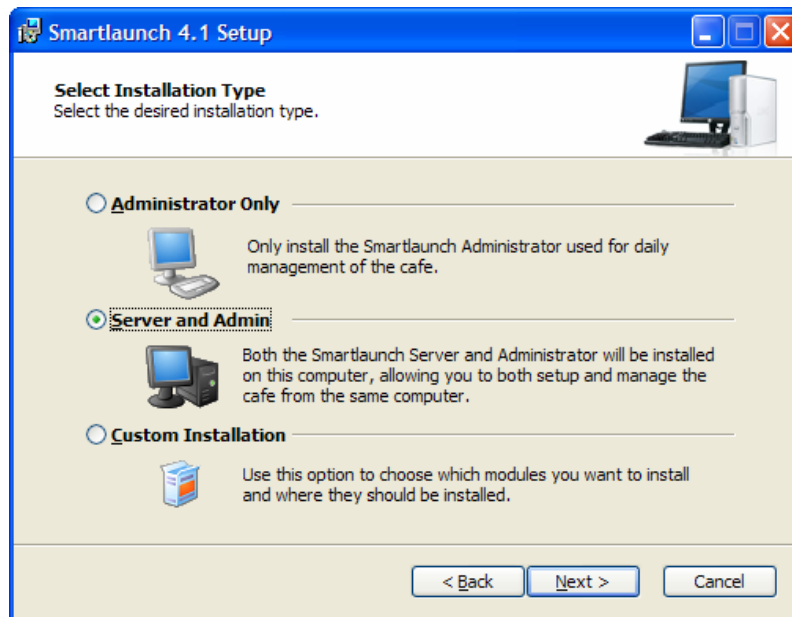


Image 7: Select which modules to install

Step 1 to 3 lets you choose if you want to install both the server and the administrator module, or only one of the two. If you want to install the client, please continue this guide on **Step 5** for more details.

The final option is called **Custom Installation**, choosing this will enable you to choose a different installation drive or directory as shown in **Image 8**. After choosing a different installation drive or folder, you will also be able to choose which modules you want to install.

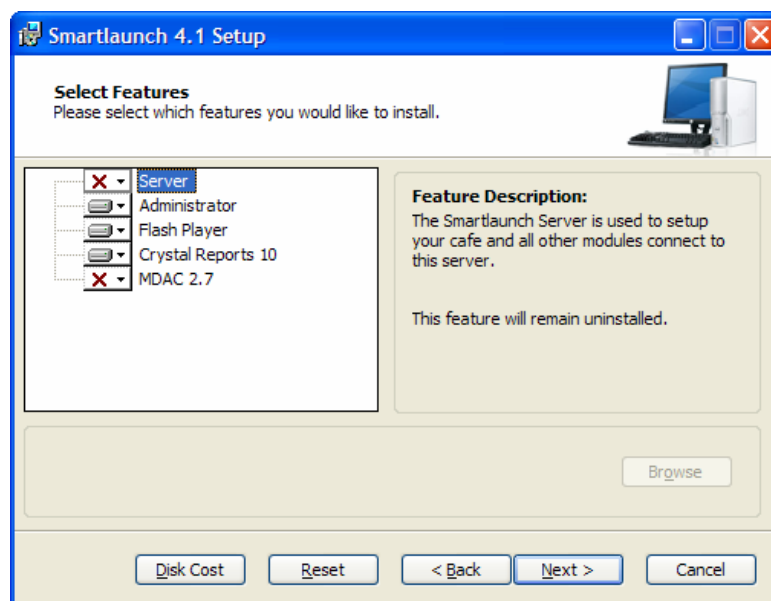


Image 8: Change installation folder

You are now ready to start the installation, just click the **Next** button to start the installation. When the installation is done, click the **Finish** button and continue to **Step 3**.

Step 3: Starting Your Smartlaunch Server for the First Time

After the installation is finished, you will find some new shortcuts on your desktop, depending on which modules you chose to install. Double-click the Smartlaunch Server icon to start the server. Every time the server starts, it will check if there are any new updates available for download. If any updates are found, a window will pop up telling you this as displayed in **Image 9**, click the **Download now** button to download and install the latest version of Smartlaunch. Checking for updates can also be done manually later on from the Server window.

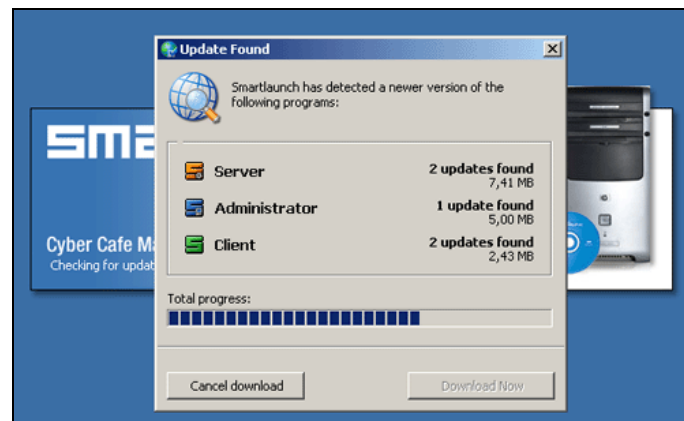


Image 9: Downloading Updates

If an update for the client or the administrator module is found, they need to be restarted in order to be updated. The client can also be forced to update from the Administrator module by **right-clicking** the computer and then clicking **Force a client update** from the Utilities submenu.

The first time you launch the server, a setup guide will start, helping you customize the server for your café, and also help you activate a new or already existing Smartlaunch account.

On the first screen you will select which country you are from, this will be helpful in the future in case you require support. In the second selection box, you set your desired language; this will from now on be the default language for both the server and the client.

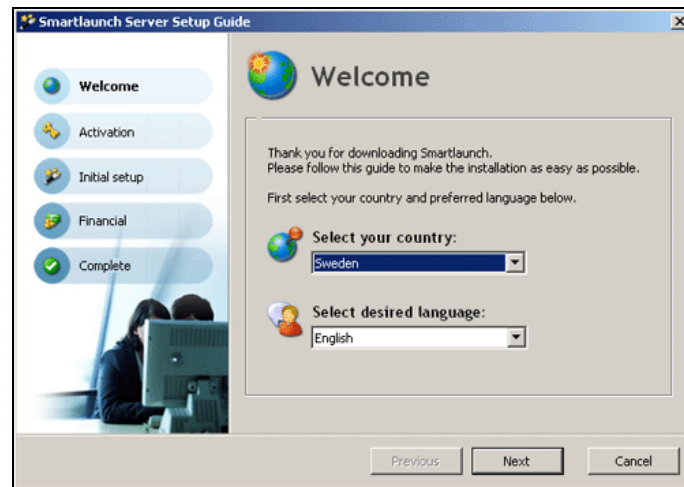


Image 10: Language Settings

If you're already a Smartlaunch customer, and know your account's login details, then please continue this guide from **Step 4**.

If you are new to Smartlaunch and want to try it out before purchasing, select **I want to try Smartlaunch**, this will let you try Smartlaunch for 15 days for free. You can easily upgrade your trial license in the future if you choose to continue using our product.




Image 11: Smartlaunch activation

Before using Smartlaunch you will have to create a trial account. Fill in the name of your café, and how many client computers you have. Remember to write down which email and password you choose for your account; this will be used to activate the account in the future. These login details can also be used to log in to the members section of the Smartlaunch homepage, where you can find detailed guides on how to:

- Creating image files for your games
- Creating cd-keys for all the latest games, and the classics

- Saving config files and save games for every user.
- Setting up shared folders between the clients and a server on the network

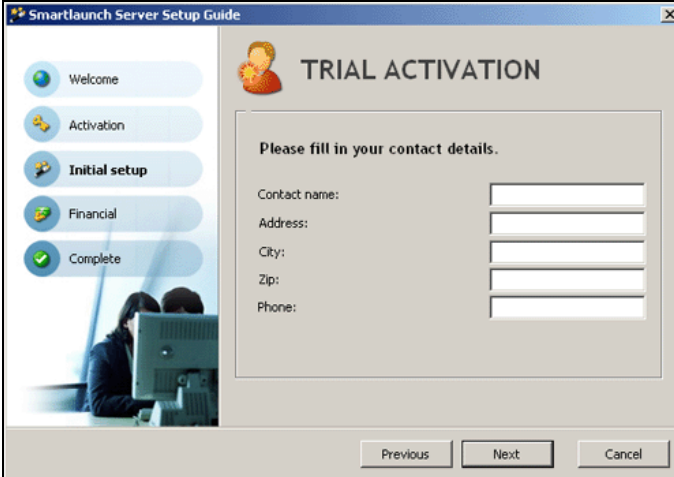
This and a lot more can be downloaded, only for Smartlaunch customers.



The screenshot shows the 'Smartlaunch Server Setup Guide' window. On the left is a vertical sidebar with five buttons: 'Welcome', 'Activation' (highlighted with a yellow background), 'Initial setup', 'Financial', and 'Complete'. The main area is titled 'TRIAL ACTIVATION' and contains the instruction 'Please fill in the fields below to activate your trial.' Below this are several input fields: 'Company Name:' (text box), 'Number of computers:' (text box), 'Where did you hear about us:' (dropdown menu showing 'Select below'), 'Email:' (text box), 'Password:' (text box), and 'Repeat Password:' (text box). At the bottom right are three buttons: 'Previous', 'Next', and 'Cancel'.

Image 12: Creating a Smartlaunch account

Fill in your contact details in the next step; this will be helpful in case you need support in the future.



The screenshot shows the 'Smartlaunch Server Setup Guide' window. On the left is a vertical sidebar with five buttons: 'Welcome', 'Activation', 'Initial setup' (highlighted with a yellow background), 'Financial', and 'Complete'. The main area is titled 'TRIAL ACTIVATION' and contains the instruction 'Please fill in your contact details.' Below this are several input fields: 'Contact name:' (text box), 'Address:' (text box), 'City:' (text box), 'Zip:' (text box), and 'Phone:' (text box). At the bottom right are three buttons: 'Previous', 'Next', and 'Cancel'.

Image 13: Contact details

Step 4: Activating an Already Existing Account

If you're already a Smartlaunch customer, then fill in your email and password to activate your account. Remember that you can only have one server for each account running at the same time.



Image 14: Activating the Smartlaunch account

If you have forgotten your login details, press the link below the textboxes and fill in the email address that you used when you registered your Smartlaunch account. A mail will then be sent shortly to that email address, with your login details.

Step 5: Customizing Smartlaunch for Your Café

This step will ask you to specify which operating system you have on your client machines. This will enable Smartlaunch to setup your security settings, most fitting for your operating system.

If you have chosen to install all of your games under the same folder, instead of its default locations, then specify this just below by clicking **Yes** and type the path to your Games folder. This will enable Smartlaunch to help you with setting up license management and personal user files for your games and applications.

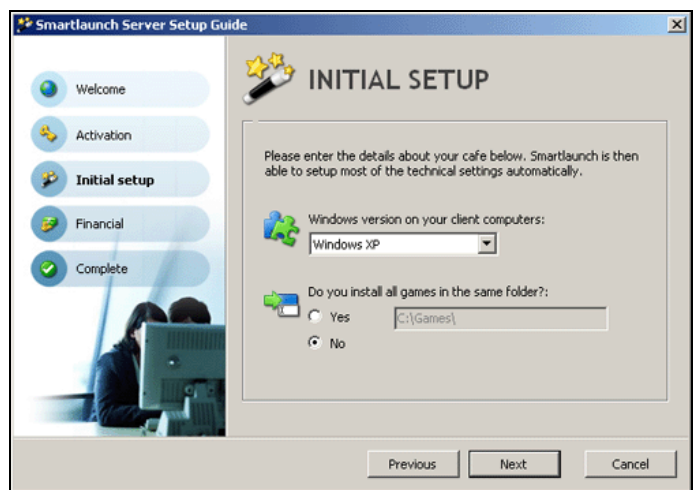


Image 15: Setting up the clients

The final step will let you specify your hourly rates, and the TAX percentage for products and computer time in your country. If you want to set a rule for your café that prohibits customers from buying for less than a specific amount, fill in the **Minimum Price** textboxes; otherwise leave it empty to allow any amount. You can specify more advanced price settings in the server settings later on (See separate guide).

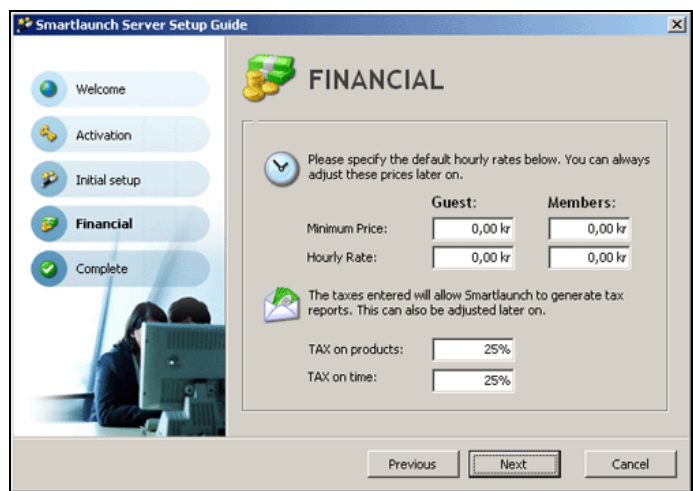


Image 16: Setting hourly rates and taxes

Step 6: Installing and Running the Client Module

Before installing the Client software, make sure that the Microsoft .NET Framework is installed (as described in **Step 1**) on the computer before continuing.

After installing the framework and the client module, you will find a new shortcut on your desktop reading **Smartlaunch Client 4.1**. When starting the client, the Client startup wizard will come up, asking you if you want to run Smartlaunch once or if it should be started when windows starts.

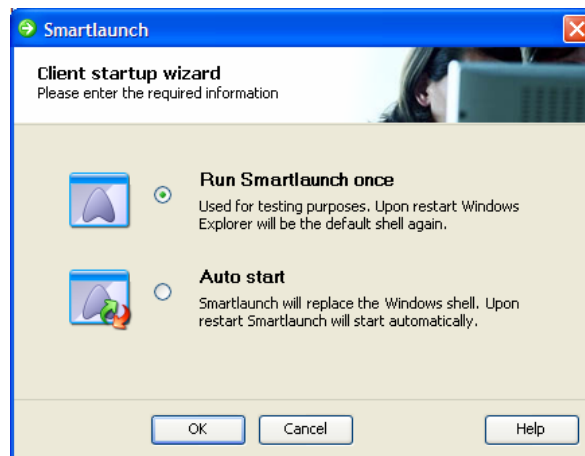


Image 17: Starting the Client

The first choice is only for testing purposes, when you log out from windows or restart the computer, it will start up as normal. The second choice is the option you want to choose when the computer is ready to be used by customers.

If this is the first time you launch the client you will also get to specify the computer number. Every computer in your café must have a unique computer number; otherwise they will block each other out from the server. You can change the computer number from the client's settings menu as described in **Step 6**.

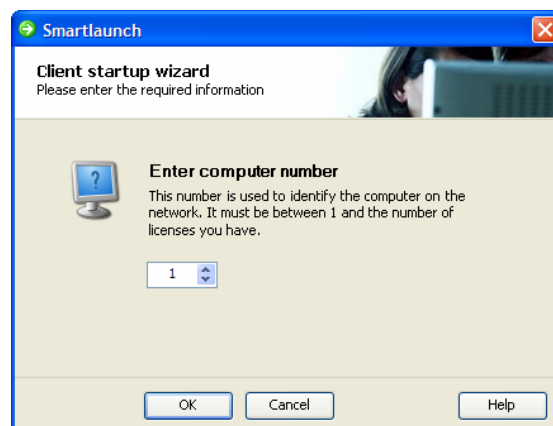


Image 18: Enter computer number

After specifying the computer number the server tries to locate the Smartlaunch server automatically, if it does not find it you will have to specify the IP address manually.

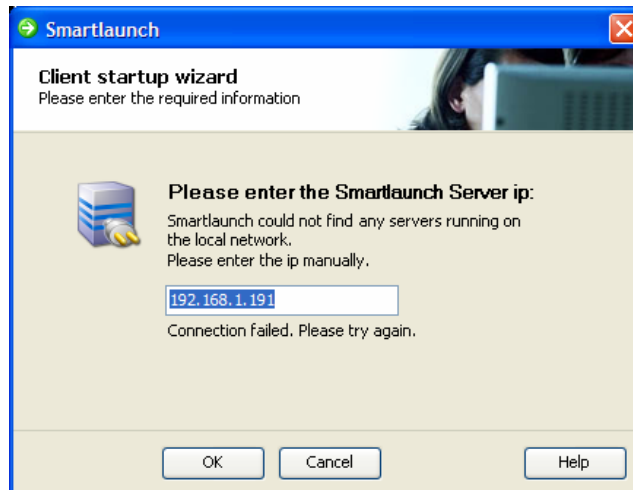


Image 19: Enter Smartlaunch Server IP

The clients use **port 7831** to connect to the server, so if you are running a firewall with internal rules between the clients and server, don't forget to open this port.

Step 7: Configuring the Client

To access the settings window from the client, press the escape button when the client is active, and type the administrator username and password into the textboxes (the default username and password is "admin"). From here you can change the settings for this client, such as the IP to the server, computer number or display properties for instance. From here you can also deactivate the Smartlaunch client and go back to the normal Windows display.

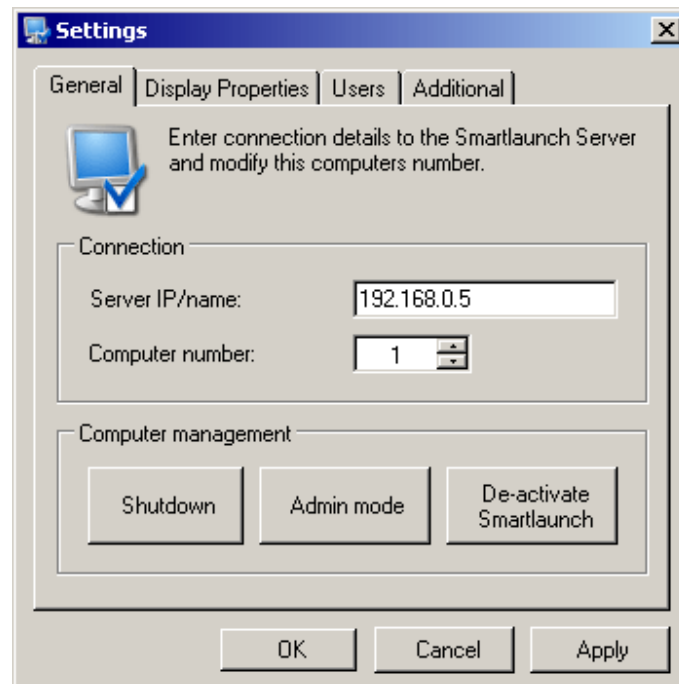


Image 19: Smartlaunch Client Settings

If you are planning to install the Smartlaunch Client on a machine that later on will be cloned by a Ghost program such as Symantec Ghost, remember to either deactivate Smartlaunch or only choose to **Run Smartlaunch once** before creating the Ghost image. If you have Smartlaunch fully activated when creating the Ghost image, all the clients will start up Smartlaunch with the same computer number. This will make all the clients block each other out, and you might have trouble accessing the Settings menu.

The recommended way is to deactivate Smartlaunch prior to creating the Ghost Image, and then manually start up and change the computer number for each computer after the new Ghost Image has been sent out.